

AXOR Citterio M

Shower thermostat for exposed installation

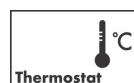
Finish: **Brushed Black Chrome** Article Number: **34635340**



product features

- 1 function
- thermostat cartridge, ceramic valve 180°
- maximum flow rate at 3 bar: 20 l/min
- min. operating pressure: 1 bar
- max. operating pressure: 10 bar
- Safety stop at 40 °C
- temperature limitation adjustable
- non-return valve
- with silencer
- centre distance: 150 ± 12 mm
- connection dimension: DN15
- connection type: s-shaped connections

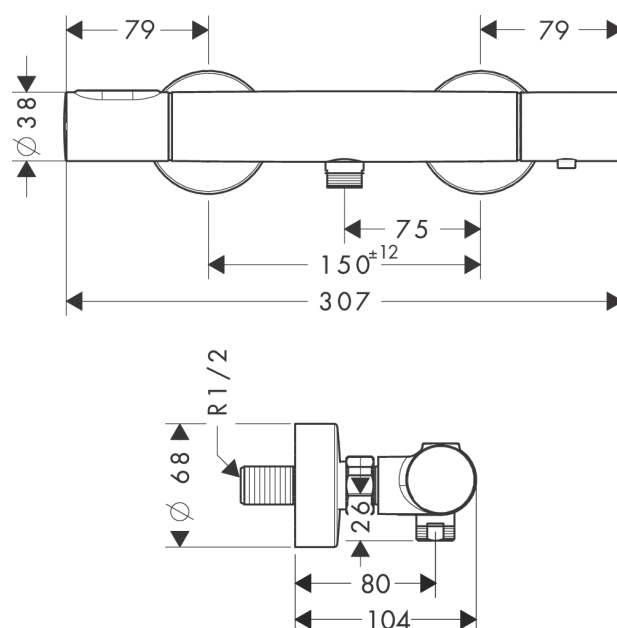
Technology



Product image



Scale drawing



AXOR Citterio M

Shower thermostat for exposed installation

Finish: **Brushed Black Chrome** Article Number: **34635340**



Flowchart

