

AXOR Uno

Single lever basin mixer for concealed installation wall-mounted with loop handle and spout 225 mm

Finish: **Chrome** Article Number: **38122000**



product features

- consists of: single lever basin mixer for concealed installation wall-mounted, waste set
- projection: 225 mm
- handle variant: flat handle
- spray type: normal spray
- maximum flow rate at 3 bar: 5 l/min
- ceramic cartridge
- temperature limitation adjustable
- suitable for continuous flow water heaters
- non-closing waste set
- connection type: basic set
- connection dimension: DN15
- handle can be positioned on the right or left, depending on the basic set installation
- EU taxonomy: max. 6 l/min - Substantial Contribution (SC) possible

Technology



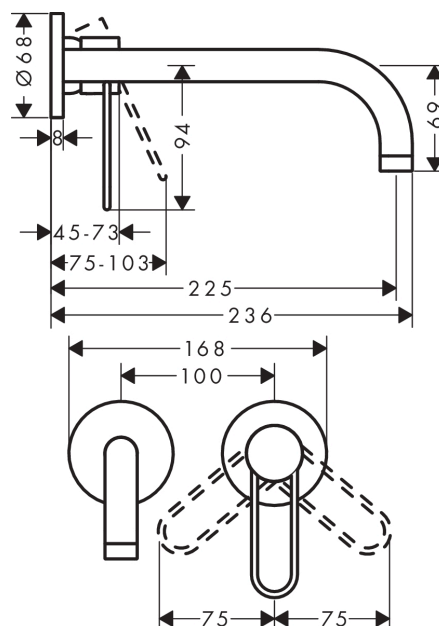
Certificates / Sustainability



Product image



Scale drawing



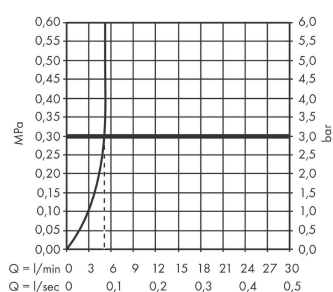
AXOR Uno

Single lever basin mixer for concealed installation wall-mounted with loop handle and spout 225 mm

Finish: **Chrome** Article Number: **38122000**



Flowchart



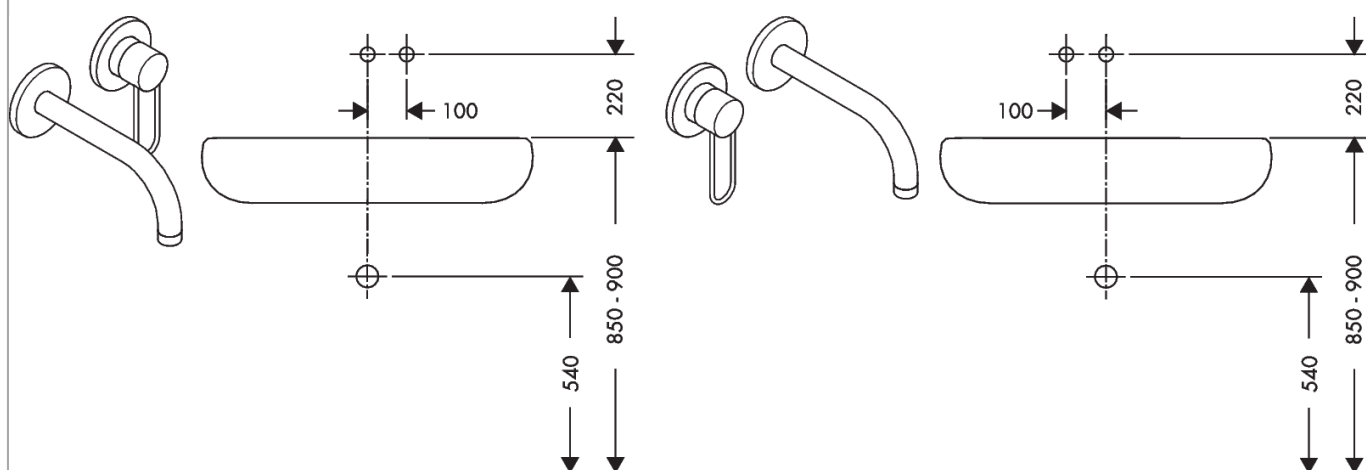
AXOR Uno

Single lever basin mixer for concealed installation wall-mounted with loop handle and spout 225 mm

Finish: **Chrome** Article Number: **38122000**



Installation examples



AXOR Uno

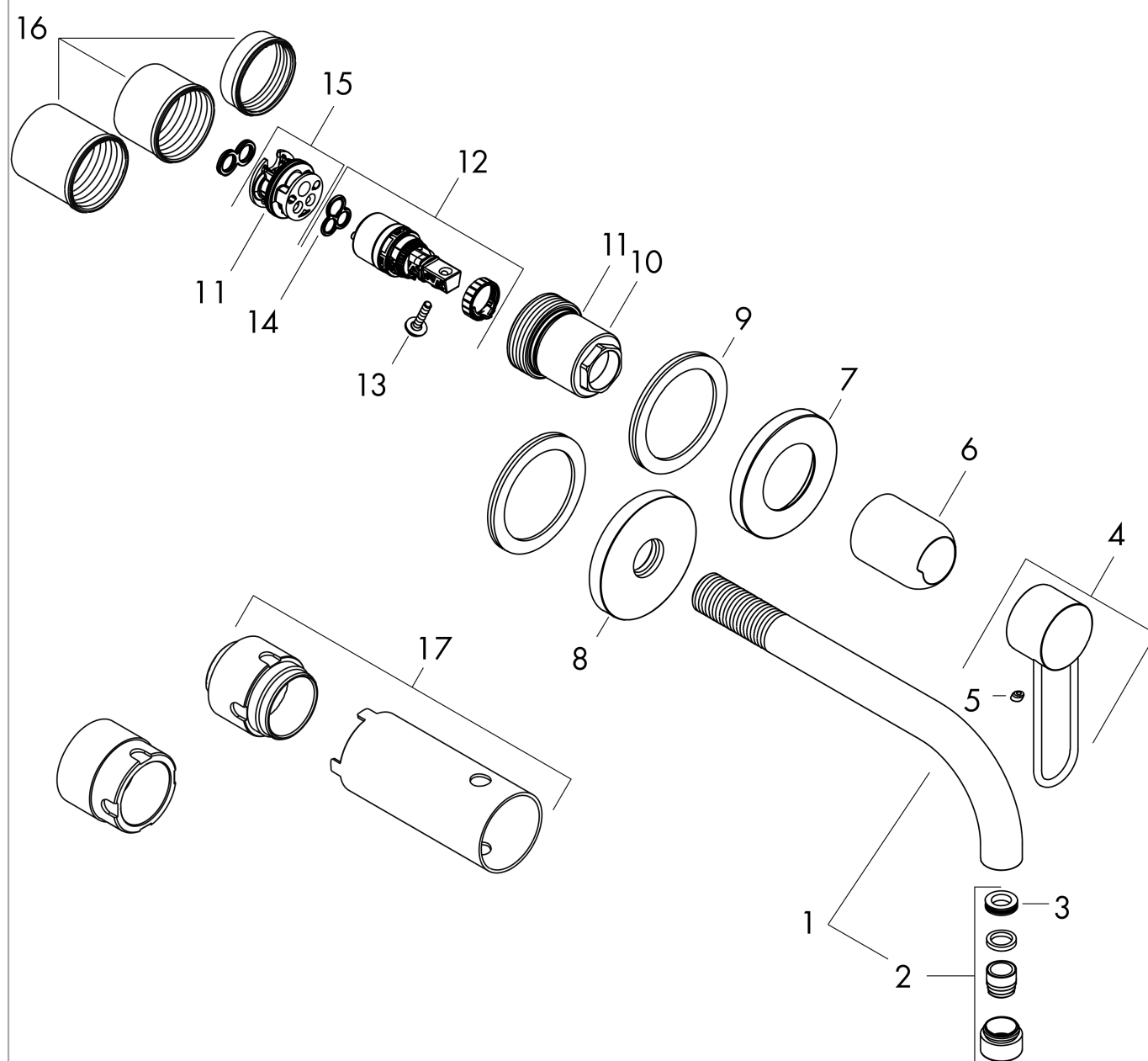
Single lever basin mixer for concealed installation wall-mounted with loop handle and spout 225 mm

Finish: **Chrome** Article Number: **38122000**



Exploded Drawing

Year of production: >04/17



AXOR Uno

Single lever basin mixer for concealed installation wall-mounted with loop handle and spout 225 mm

Finish: **Chrome** Article Number: **38122000**



Spare part list

Year of production: >04/17

Pos.		Article Number	PC	PU
1	spout 220 mm	97368000	16	1
2	aerator M18x1 (5 l/min)	95387000	9	1
3	O-ring 13x1,5	98475000	1	1
4	handle	93054000	11	1
5	screw cover	96338000	1	1
6	sleeve	93053000	9	1
7	escutcheon Ø 68 mm	93052000	8	1
8	escutcheon for spout	96910000	12	1
9	washer	97600000	4	1
10	nut	93141000	9	1
11	O-ring 26x2	98147000	1	1
12	cartridge, assy	97685000	11	1
13	locking screw for handle	95140000	2	1
14	seal	98865000	8	1
15	adapter for cartridge	95634000	4	1
16	fixing set	97971000	9	1
17	extension set 25 mm for 13622180	31971000	99	1
a	waste	50001000	99	1
b	adapter for exchanged connections	93819000	16	1