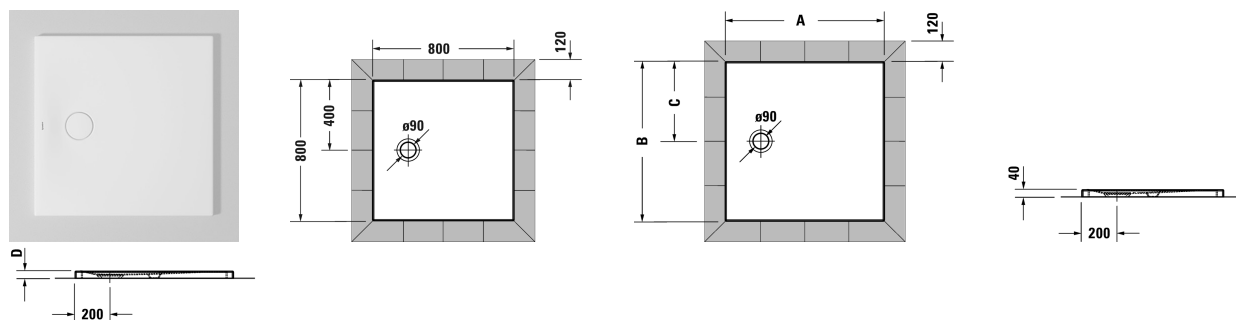


Tempano Flush Fitted Shower Tray # 720187000000000 / 720187000000001

|< 800 mm >|



Flush Fitted Shower Tray	Dimension	Weight	Order number
square, with pre-mounted sealing collar, sanitary acrylic, 40 mm			
Colors			
00 White Alpin			
Variant			
Shower tray	800 x 800 mm	20.500 kilogram	720187000000000
Shower tray with Antislip	800 x 800 mm	20.500 kilogram	720187000000001
Accessory for shower trays			
Formwork board ****			792805
Noise reduction set for flush-fitted shower trays ***			791372
Outlet drain vertical outlet			790269
Outlet drain horizontal outlet			790263
Outlet drain for installation with support frame, horizontal outlet, **, white			791283
Shower tray feet suitable for increased installation height, *			790173
Support frame for shower tray 800 x 800 mm			791373

All drawings contain the necessary measurements which are subject to standard tolerances. They are stated in mm and are non-binding. Exact measurements, in particular for customised installation scenarios, can only be taken from the finished piece.