

KNIEF



acrylic freestanding designs



welcome to our world of architecture and design. modern interior design has elevated the bathroom into an oasis of serenity and relaxation where knief is one of europe's leading producers of acrylic and solid surface material.

please join us on a tour through design, elegance, architecture, and inspiration. no matter what your goal is, whether you are looking for individual architectural projects or the creation of a personal space: the diversity of our formal language is unmistakable and offers a unique aesthetic.

discover our sophisticated collection and let us dazzle you with the fascination of our range.



freestanding bathtubs / freestanding spas

welcome



freestanding bathtubs / 6

modern design / 10

- boat / 12
- box / 13
- club / 14
- cosy / 16
- cube / 17
- culture / 18
- form / 19
- loft / 20
- loft IV / 21
- look / 22
- loom / 23
- lounge / 24
- south / 25
- mood / 26
- tidy / 27
- nice 170 / 28
- nice 180 / 29
- oval / 30
- venice / 31
- relax / 32

concept design / 36

- summer / 38
- summer wall / 39
- pure corner / 40
- hot / 42
- wall / 43
- wall corner / 44
- fresh / 46
- fresh wall / 47
- fresh corner / 48
- fresh 2.0 / 50
- fresh 2.0 wall / 51
- fresh 2.0 corner / 52
- dream / 54
- dream wall / 55
- sit / 56

xs design / 60

- fresh xs / 62
- fresh xs wall / 63
- fresh xs corner / 64
- neo / 66
- wall xs / 67
- wall xs corner / 68
- loom xs / 70
- form xs / 71
- cube xs / 72

traditional design / 76

- edwardian / 78
- edwardian xl / 79
- princess / 80
- princess I / 81
- retro / 82
- slipper / 83
- roll top / 84
- roll top xl / 85
- victorian / 86

colourful design / 90

- unicoloured / 92
- bicoloured WG / 94
- bicoloured WM / 96

- accessories / 100
- drain & overflow fittings / 102



freestanding spas / 104

spa design / 108

- spa modules / 110
- features & details / 111

- why knief? / 112
- toc / 114
- contact / 118
- join us / 122

qr codes
for further
product information



additional information, such as technical drawings, installation and care instructions is conveniently provided for each product via the qr code.

enjoy
every moment



aqua plus® – freestanding bathtubs

comfort in any situation, understanding the customer's wishes and needs and creating quality of life; are aspects that are characteristics of modern interior design today. modern bathrooms are increasingly turning into a living space with an aesthetic and individual character. the innovative bathroom as a place of rest and oasis of relaxation combines its useful aspect with a comfortable interior.

a relaxing bath is the best remedy for the stress of everyday life. our range lives up to the highest demands in terms of design, functionality, and quality. it integrates harmoniously into individually coordinated design concepts and room situations. with its extraordinarily diverse formal language, the collection covers the categories of modern, traditional, and special designs. options with attractive and diverse shapes, straight or playful lines, symmetrical or asymmetrical, freestanding or fitted, ensure a unique and aesthetically valuable atmosphere and meet any wish for personal comfort.

we apply all our skills and knowledge to creating products that meet the highest standards in terms of design, material, and processing quality. in accordance with our strict quality standards, the entire collection is produced in europe exclusively and is based on the highest quality standards.

our entire collection is LGA certified. thanks to the good quality material properties and our qualified production technology, we can even surpass highest european quality standards for bathtubs such as the EN 198. of course, our products are CE compliant and comply with EN 14516. apart from this, our products have been certified to DIN 4109 and SIA 181 by the fraunhofer institute. we offer a reliable 10-year warranty on our acrylic products.



freestanding
bathtubs

the fascination
of creative design
in its highest
perfection



modern design

the fascination of creative design
in its highest perfection

bathrooms are increasingly becoming an important living space with modern character, combining individual design demands with the ambience of meditative peace or stimulating vitality. we make your dreams come true! experience our vast range of modern freestanding bathtubs and enjoy the luxury and fascination of our unique designs in incomparable style!



relax

			
boat 1850 x 950 x 635 mm	box 1800 x 800 x 600 mm	club Ø 1600 x 620 mm	cosy 1800 x 850 x 600 mm
			
cube 1700 x 800 x 570 mm	culture 1800 x 800 x 600 mm	look 1800 x 800 x 600 mm	form 1900 x 895 x 600 mm
			
loft 1795 x 800 x 590 mm	loft IV 1795 x 800 x 690 mm	loom 1900 x 950 x 600 mm	lounge 1850 x 945 x 635 mm
			
south 1830 x 814 x 610 mm	mood 1805 x 800 x 610 mm	tidy 1800 x 800 x 600 mm	nice 170 1700 x 750 x 600 mm
			
nice 180 1800 x 850 x 600 mm	oval 1795 x 945 x 620 mm	venice 1805 x 835 x 670 / 745 mm	relax 1800 x 850 x 625 / 760 mm

boat

the organic shape of our "boat" conveys security and comfort. drop into it and relax.



colour options: unicoloured

- WG
- WM

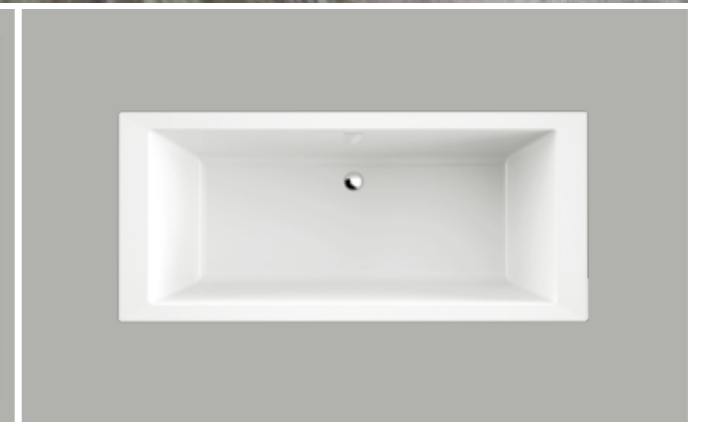
technical data

article number	0100-059
dimensions	1850 x 950 x 635 mm (l x w x h)
weight	53 kg
volume	276 l
overflow options	slot overflow, round overflow, overflow filling



box

„think outside the box!“ take a seat in our "box" and enjoy perfect wellness.



colour options: unicoloured

- WG
- WM

technical data

article number	0100-269
dimensions	1800 x 800 x 600 mm (l x w x h)
weight	52 kg
volume	260 l
overflow options	slot overflow, round overflow, overflow filling

round off a successful day perfectly.
the model "club" with its circular shape invites
you to relax.

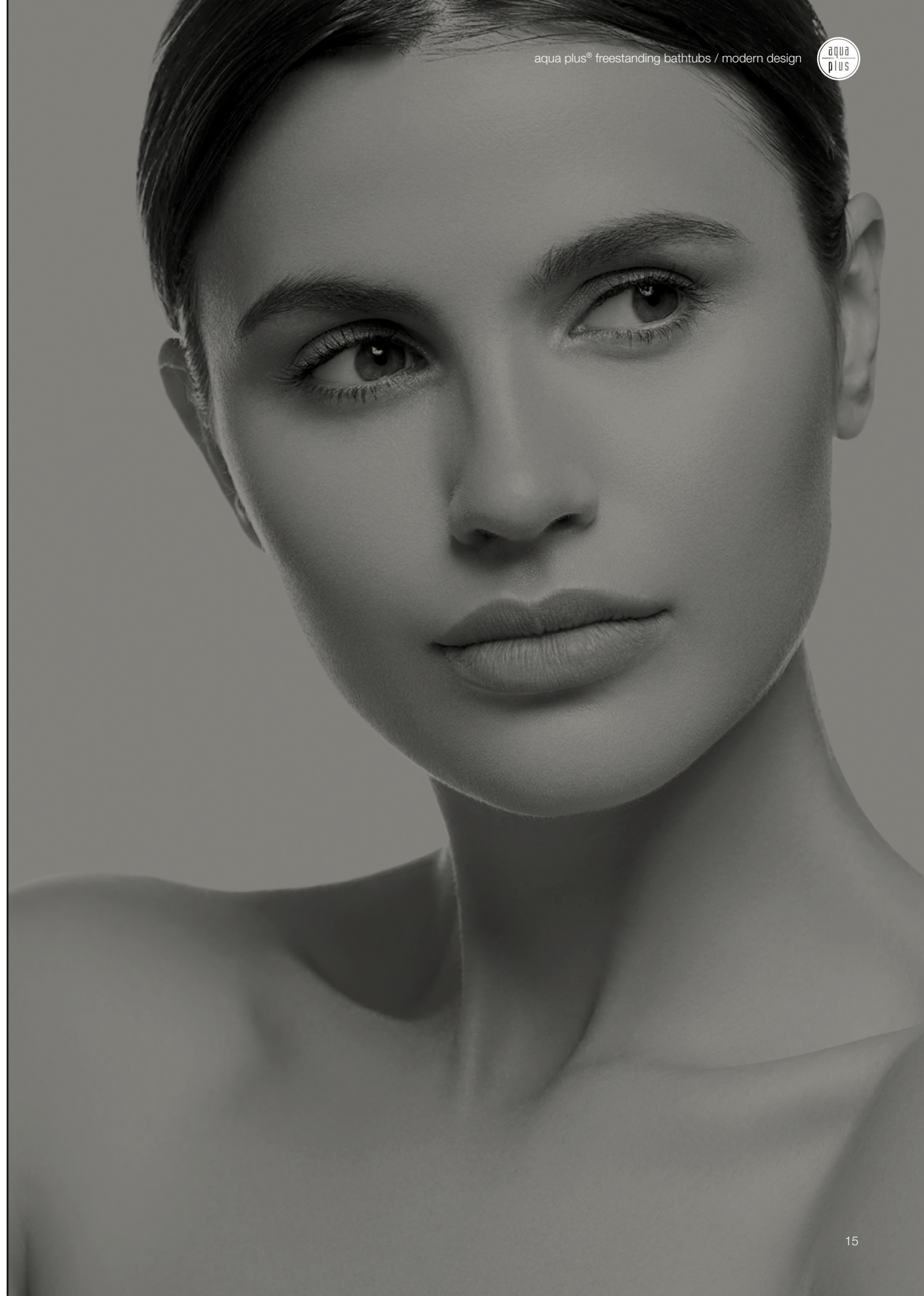


colour options: unicoloured

- WG
- WM

technical data

article number	0100-075
dimensions	Ø 1600 x 620 mm (l x w x h)
weight	66 kg
volume	290 l
overflow options	slot overflow, round overflow, overflow filling



cosy

with a purist expert design – “cosy” pleases the eye while adding a highlight to your bathroom.



colour options: unicoloured

- WG
- WM

technical data

article number	0100-279
dimensions	1800 x 850 x 600 mm (l x w x h)
weight	51 kg
volume	200 l
overflow options	slot overflow, round overflow, overflow filling



cube

the tapered lines of our “cube” convey a feeling of distance and space. please feel invited.



colour options: unicoloured

- WG
- WM

technical data

article number	0100-284
dimensions	1700 x 800 x 570 mm (l x w x h)
weight	48 kg
volume	220 l
overflow	slot overflow

culture

straight-lined, space-filling, and uncompromising in design. the model "culture" is for the purists among our customers.



colour options: unicoloured

- WG
- WM

technical data

article number	0100-068
dimensions	1800 x 800 x 600 mm (l x w x h)
weight	52 kg
volume	260 l
overflow options	slot overflow, round overflow, overflow filling



form

this beautiful "form" is the successful result for a design classic. benefit from our know-how and give yourself a very special treat in your personal spa area.



colour options: unicoloured

- WG
- WM
- BM
- CM

colour options: bicoloured

- WGBG
- WGRW
- WGBM
- WGAN
- WGCM
- WGK
- WMBM
- WMAN
- WMCM
- WMK

technical data

article number	0100-087
dimensions	1900 x 895 x 600 mm (l x w x h)
weight	53 kg
volume	290 l
overflow options	slot overflow, round overflow, overflow filling

loft

our modern interpretation of a classical bathtub:
the "loft" model.



colour options: unicoloured

- WG
- WM

technical data

article number	0100-067
dimensions	1795 x 800 x 590 mm (l x w x h)
weight	64 kg
volume	230 l
overflow	round overflow



loft IV
with plinth

reinterpreting the classical bathtub in the
"loft iv", also available with a base.



colour options: unicoloured

- WG
- WM

technical data

article number	0100-067-06
dimensions	1795 x 800 x 690 mm (l x w x h)
weight	72 kg
volume	230 l
overflow	round overflow

look

„look“ – a trendsetter in the bathroom, which is defined by elegance & simplicity.



colour options: unicoloured

- WG
- WM

technical data

article number	0100-050
dimensions	1800 x 800 x 600 mm (l x w x h)
weight	135 kg
volume	280 l
overflow	slot overflow



loom

perfect elegance! exclusive and spacious design for a particularly relaxing bathing experience.



colour options: unicoloured

- WG
- WM
- BM
- CM

colour options: bicoloured

- WGBG
- WGBM
- WGAN
- WGCM
- WGK
- WMBM
- WMAN
- WMCM
- WMK

technical data

article number	0100-088
dimensions	1900 x 950 x 600 mm (l x w x h)
weight	53 kg
volume	250 l
overflow options	slot overflow, round overflow, overflow filling

lounge

this beautifully shaped bathtub offers space for meditative calm and conveys a feeling of security with its asymmetrical egg shape.



colour options: unicoloured

- WG
- WM

technical data

article number	0100-089
dimensions	1850 x 945 x 635 mm (l x w x h)
weight	53 kg
volume	250 l
overflow options	slot overflow, round overflow, overflow filling



south

relaxing moments as if under a southern sun. our "south" will let you immerse yourself in the perfect holiday feeling.



colour options: unicoloured

- WG
- WM

technical data

article number	0100-210
dimensions	1830 x 814 x 610 mm (l x w x h)
weight	55 kg
volume	295 l
overflow options	slot overflow, round overflow, overflow filling

mood

straight lines! a flat bathtub rim and tapered sides ensure optimal bathing comfort.



colour options: unicoloured

- WG
- WM
- BM
- CM

colour options: bicoloured

- WGBG
- WGBM
- WGAN
- WGCM
- WGK
- WMBM
- WMAN
- WMCM
- WMK

technical data

article number	0100-085
dimensions	1805 x 800 x 610 mm (l x w x h)
weight	52 kg
volume	230 l
overflow options	slot overflow, round overflow, overflow filling



tidy

modern, tidy, space-saving, and comfortable. our flush-mounted "tidy" model combines many features into a perfect tub for the small bathroom.



colour options: unicoloured

- WG
- WM
- BM
- CM

colour options: bicoloured

- WGBG
- WGBM
- WGAN
- WGCM
- WGK
- WMBM
- WMAN
- WMCM
- WMK

technical data

article number	0100-242
dimensions	1800 x 800 x 600 mm (l x w x h)
weight	65 kg
volume	295 l
overflow options	slot overflow, round overflow, overflow filling

nice 170

harmonious, organic, timeless – classically beautiful. the “nice” creates an attractive haven of peace in your bathroom with its balance.



colour options: unicoloured

- WG
- WM
- BM
- CM

colour options: bicoloured

- WGBG
- WGBM
- WGAN
- WGCM
- WGK
- WMBM
- WMAN
- WMCM
- WMK

technical data

article number	0100-260
dimensions	1700 x 750 x 600 mm (l x w x h)
weight	48 kg
volume	195 l
overflow	slot overflow



nice 180

harmonious balance is also available proportionally enlarged. enjoy relaxed moments in our “nice 180”.



colour options: unicoloured

- WG
- WM
- BM
- CM

colour options: bicoloured

- WGBG
- WGBM
- WGAN
- WGCM
- WGK
- WMBM
- WMAN
- WMCM
- WMK

technical data

article number	0100-261
dimensions	1800 x 850 x 600 mm (l x w x h)
weight	48 kg
volume	210 l
overflow	slot overflow

oval

the generous, oval basic shape in connection with elegant curves offers a wonderful aesthetic.



colour options: unicoloured

- WG
- WM

technical data

article number	0100-080
dimensions	1795 x 945 x 620 mm (l x w x h)
weight	39 kg
volume	210 l
overflow options	slot overflow, round overflow, overflow filling



venice

extraordinary design! the striking shape of this modern bathtub and its effect in the room are enchanting.



colour options: unicoloured

- WG
- WM

technical data

article number	0100-083
dimensions	1805 x 835 x 670/745 mm (l x w x h)
weight	48 kg
volume	200 l
overflow options	slot overflow, round overflow, overflow filling

relax

our model "relax" has transposed the traditional, victorian style into modern surroundings.



colour options: unicoloured

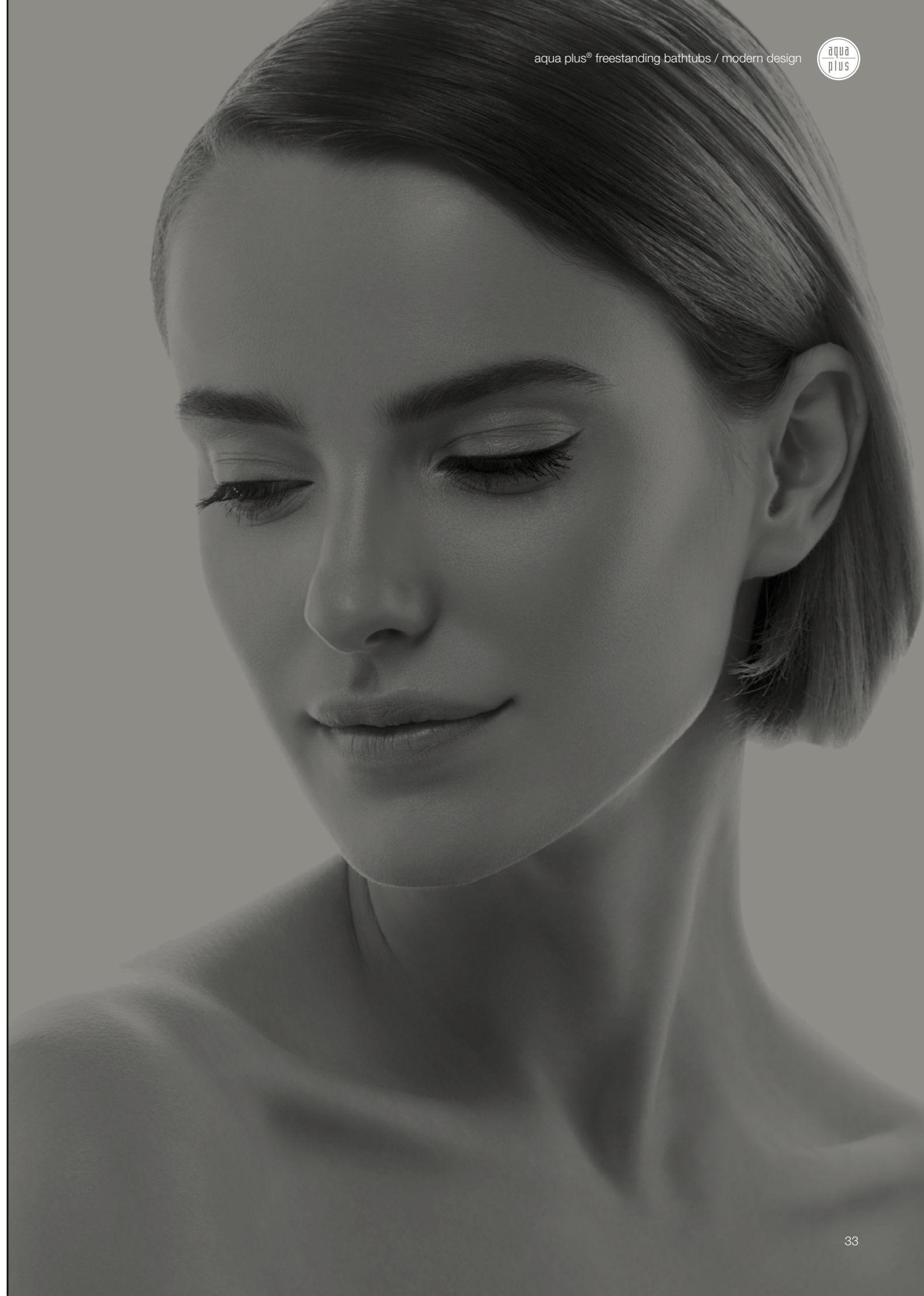
- WG
- WM

colour options: bicoloured

- WGBG
- WGRW
- WMBM

technical data

article number	0100-278
dimensions	1800 x 850 x 625 / 760 mm (l x w x h)
weight	51 kg
volume	190 l
overflow options	slot overflow, round overflow, overflow filling



elaborate
design ideas
satisfy aesthetic
creativity demands




concept design

elaborate design ideas
satisfy aesthetic creativity demands

creative work and the choice of individual accessories and options are the icing on the cake. make your bathroom inevitably special! our special design models show in perfection the diversity of outstanding combinations of different materials. all parts are of highest quality and individually handcraft made. that makes every bathtub unique! enjoy the luxury and fascination of our special design bathtubs and refine your everyday life.



wall

			
summer 1900 x 900 x 600 mm	summer wall 1900 x 1000 x 600 mm	pure corner 1800 x 800 x 600 mm	pure corner 1800 x 800 x 600 mm
			
hot 1795 x 795 x 595 mm	wall 1800 x 800 x 600 mm	wall corner 1780 x 780 x 580 mm	wall corner 1780 x 780 x 580 mm
			
fresh 1800 x 800 x 600 mm	fresh wall 1800 x 800 x 600 mm	fresh corner 1800 x 800 x 600 mm	fresh corner 1800 x 800 x 600 mm
			
fresh 2.0 1700 x 800 x 600 mm	fresh 2.0 wall 1700 x 750 x 600 mm	fresh 2.0 corner 1550 x 750 / 500 x 600 mm	fresh 2.0 corner 1550 x 750 / 500 x 600 mm
			
dream 1800 x 800 x 600 mm	dream wall 1800 x 800 x 600 mm	sit 1350 x 8080 x 650 / 725 mm	

summer

trendy design from peter jamieson: enjoy the sophisticated ergonomometry of the "summer". enjoy relaxed wellness moments.



colour options: unicoloured

- WG
- WM
- BM
- CM

colour options: bicoloured

- WGBG
- WGBM
- WGAN
- WGCM
- WGK
- WMBM
- WMAN
- WMCM
- WMK

technical data

article number	0100-270
dimensions	1900 x 900 x 600 mm (l x w x h)
weight	58 kg
volume	250 l
overflow	slot overflow



summer wall

perfect ergonomometry also in the back to wall system. space-saving, sophisticated, and designed for your well-being.



colour options: unicoloured

- WG
- WM
- BM
- CM

colour options: bicoloured

- WGBG
- WGBM
- WGAN
- WGCM
- WGK
- WMBM
- WMAN
- WMCM
- WMK

technical data

article number	0100-271
dimensions	1900 x 1000 x 600 mm (l x w x h)
weight	58 kg
volume	250 l
overflow options	slot overflow, round overflow

pure corner
corner right, rounding left

our model "pure" has a name that is symbolic of the clear lines and the purist design that discreetly fits in with your existing interior. model with rounded corner on the left.



colour options: unicoloured

- WG
- WM

colour options: bicoloured

- WGBG

technical data

article number	0100-047
dimensions	1800 x 800 x 600 mm (l x w x h)
weight	58 kg
volume	275 l
overflow options	slot overflow, round overflow, overflow filling

pure corner
corner left, rounding right

our model "pure" has a name that is symbolic of the clear lines and the purist design that discreetly fits in with your existing interior. model with rounded corner on the right.



colour options: unicoloured

- WG
- WM

colour options: bicoloured

- WGBG

technical data

article number	0100-048
dimensions	1800 x 800 x 600 mm (l x w x h)
weight	56 kg
volume	275 l
overflow options	slot overflow, round overflow, overflow filling

hot

inspired by the last century, this modern, stylish bathtub interprets the ergonomic classic bathtub design in the spirit of our time.



colour options: unicoloured

- WG
- WM
- BM
- CM

colour options: bicoloured

- WGBG
- WGBM
- WGAN
- WGCM
- WGK
- WMBM
- WMAN
- WMCM
- WMK

technical data

article number	0100-072
dimensions	1795 x 795 x 595 mm (l x w x h)
weight	50 kg
volume	230 l
overflow options	slot overflow, round overflow, overflow filling



wall

r(e)volutionary! saving space at its most beautiful. this bathtub's special design permits one-sided wall mounting and creates the perfect illusion of a freestanding bathtub.



colour options: unicoloured

- WG
- WM
- BM
- CM

colour options: bicoloured

- WGBG
- WGBM
- WGAN
- WGCM
- WGK
- WMBM
- WMAN
- WMCM
- WMK

technical data

article number	0100-277
dimensions	1800 x 800 x 600 mm (l x w x h)
weight	48 kg
volume	210 l
overflow options	slot overflow, round overflow, overflow filling

wall corner

corner right, rounding left

the "wall" taken to the next step! this modern bathtub allows a flush wall connection and beautifies your bathroom, even with little space.



colour options: unicoloured

- WG
- WM
- BM
- CM

colour options: bicoloured

- WGBG
- WGRW
- WGBM
- WGAN
- WGCM
- WGK
- WMBM
- WMAN
- WMCM
- WMK

technical data

article number	0100-277-L
dimensions	1780 x 780 x 580 mm (l x w x h)
weight	45 kg
volume	205 l
overflow options	slot overflow, round overflow, overflow filling

wall corner

corner left, rounding right

in addition to the right-hand "wall" option, it is of course also available in a left-hand design. the ideal solution for small bathrooms.



colour options: unicoloured

- WG
- WM
- BM
- CM

colour options: bicoloured

- WGBG
- WGRW
- WGBM
- WGAN
- WGCM
- WGK
- WMBM
- WMAN
- WMCM
- WMK

technical data

article number	0100-277-R
dimensions	1780 x 780 x 580 mm (l x w x h)
weight	45 kg
volume	205 l
overflow options	slot overflow, round overflow, overflow filling

fresh

this modern bathtub interprets classic bathtub design in the spirit of our time. its unique shape creates a deep feeling of comfort, inviting you to relax.



colour options: unicoloured

- WG
- WM
- BM
- CM

colour options: bicoloured

- WGBG
- WGBM
- WGAN
- WGCM
- WGK
- WMBM
- WMAN
- WMCM
- WMK

technical data

article number	0100-230
dimensions	1800 x 800 x 600 mm (l x w x h)
weight	50 kg
volume	210 l
overflow options	slot overflow, round overflow, overflow filling



fresh wall

developed from the "fresh" mode, this tub embodies the character of a free-standing bathtub in a space-saving shape and offers the same comfort.



colour options: unicoloured

- WG
- WM
- BM
- CM

colour options: bicoloured

- WGBG
- WGBM
- WGAN
- WGCM
- WGK
- WMBM
- WMAN
- WMCM
- WMK

technical data

article number	0100-231
dimensions	1800 x 800 x 600 mm (l x w x h)
weight	48 kg
volume	210 l
overflow options	slot overflow, round overflow, overflow filling

fresh corner

corner right, rounding left

elegant design in a space-saving shape. the special design of our "fresh corner" model permits wall mounting flush on the right. improve your bathroom with this convenient corner solution!



colour options: unicoloured

- WG
- WM
- BM
- CM

colour options: bicoloured

- WGBG
- WGBM
- WGAN
- WGCM
- WGK
- WMBM
- WMAN
- WMCM
- WMK

technical data

article number	0100-233
dimensions	1800 x 800 x 600 mm (l x w x h)
weight	50 kg
volume	210 l
overflow options	slot overflow, round overflow, overflow filling

fresh corner

corner left, rounding right

elegant design in a space-saving shape. the special design of our "fresh corner" model permits wall mounting flush on the left. improve your bathroom with this convenient corner solution!



colour options: unicoloured

- WG
- WM
- BM
- CM

colour options: bicoloured

- WGBG
- WGBM
- WGAN
- WGCM
- WGK
- WMBM
- WMAN
- WMCM
- WMK

technical data

article number	0100-232
dimensions	1800 x 800 x 600 mm (l x w x h)
weight	50 kg
volume	210 l
overflow options	slot overflow, round overflow, overflow filling

fresh 2.0

strong performance! our best-selling concept reshaped with sharper edges and ideal sizes. improve your bathroom with this elegant and stylish bathtub.



colour options: unicoloured

- WG
- WM
- BM
- CM

colour options: bicoloured

- WGBG
- WGBM
- WGAN
- WGCM
- WGK
- WMBM
- WMAN
- WMCM
- WMK

technical data

article number	0100-239
dimensions	1700 x 800 x 600 mm (l x w x h)
weight	60 kg
volume	265 l
overflow options	slot overflow, round overflow, overflow filling



fresh 2.0 wall

our best-selling concept as a version flush with the wall. this version of the "fresh 2.0" is space-saving and offers comfortable bathing joy where a freestanding tub would not have space.



colour options: unicoloured

- WG
- WM
- BM
- CM

colour options: bicoloured

- WGBG
- WGBM
- WGAN
- WGCM
- WGK
- WMBM
- WMAN
- WMCM
- WMK

technical data

article number	0100-238
dimensions	1700 x 750 x 600 mm (l x w x h)
weight	50 kg
volume	245 l
overflow options	slot overflow, round overflow, overflow filling

fresh 2.0 corner

long side right

our best-selling concept has been developed in a smaller size as the "fresh 2.0 corner". this model offers a smart solution for smaller rooms.



colour options: unicoloured

- WG
- WM
- BM
- CM

colour options: bicoloured

- WGBG
- WGBM
- WGAN
- WGCM
- WGK
- WMBM
- WMAN
- WMCM
- WMK

technical data

article number	0100-240
dimensions	1550 x 750/500 x 600 mm (l x w x h)
weight	42 kg
volume	175 l
overflow options	slot overflow, round overflow, overflow filling

fresh 2.0 corner

long side left

our best-selling concept has been developed in a smaller size as the "fresh 2.0 corner". this model offers a smart solution for smaller rooms.



colour options: unicoloured

- WG
- WM
- BM
- CM

colour options: bicoloured

- WGBG
- WGBM
- WGAN
- WGCM
- WGK
- WMBM
- WMAN
- WMCM
- WMK

technical data

article number	0100-241
dimensions	1550 x 750/500 x 600 mm (l x w x h)
weight	42 kg
volume	175 l
overflow options	slot overflow, round overflow, overflow filling

dream

inspired by designs from the past century, this model interprets modern tub design in a contemporary manner based on designs by peter jamieson.



colour options: unicoloured

- WG
- WM
- BM
- CM

colour options: bicoloured

- WGBG
- WGBM
- WGAN
- WGCM
- WGK
- WMBM
- WMAN
- WMCM
- WMK

technical data

article number	0100-251
dimensions	1800 x 800 x 600 mm (l x w x h)
weight	43 kg
volume	170 l
overflow options	slot overflow, round overflow, overflow filling



dream wall

its elegant design, combined with the flush construction against the wall, makes this model unique. where space for a free-standing bathtub is lacking, our "dream wall" is the perfect solution.



colour options: unicoloured

- WG
- WM
- BM
- CM

colour options: bicoloured

- WGBG
- WGBM
- WGAN
- WGCM
- WGK
- WMBM
- WMAN
- WMCM
- WMK

technical data

article number	0100-252
dimensions	1800 x 800 x 600 mm (l x w x h)
weight	46 kg
volume	170 l
overflow options	slot overflow, round overflow, overflow filling

sit

absolute form perfection! enjoy perfect comfort in our free-standing sitting bathtub.

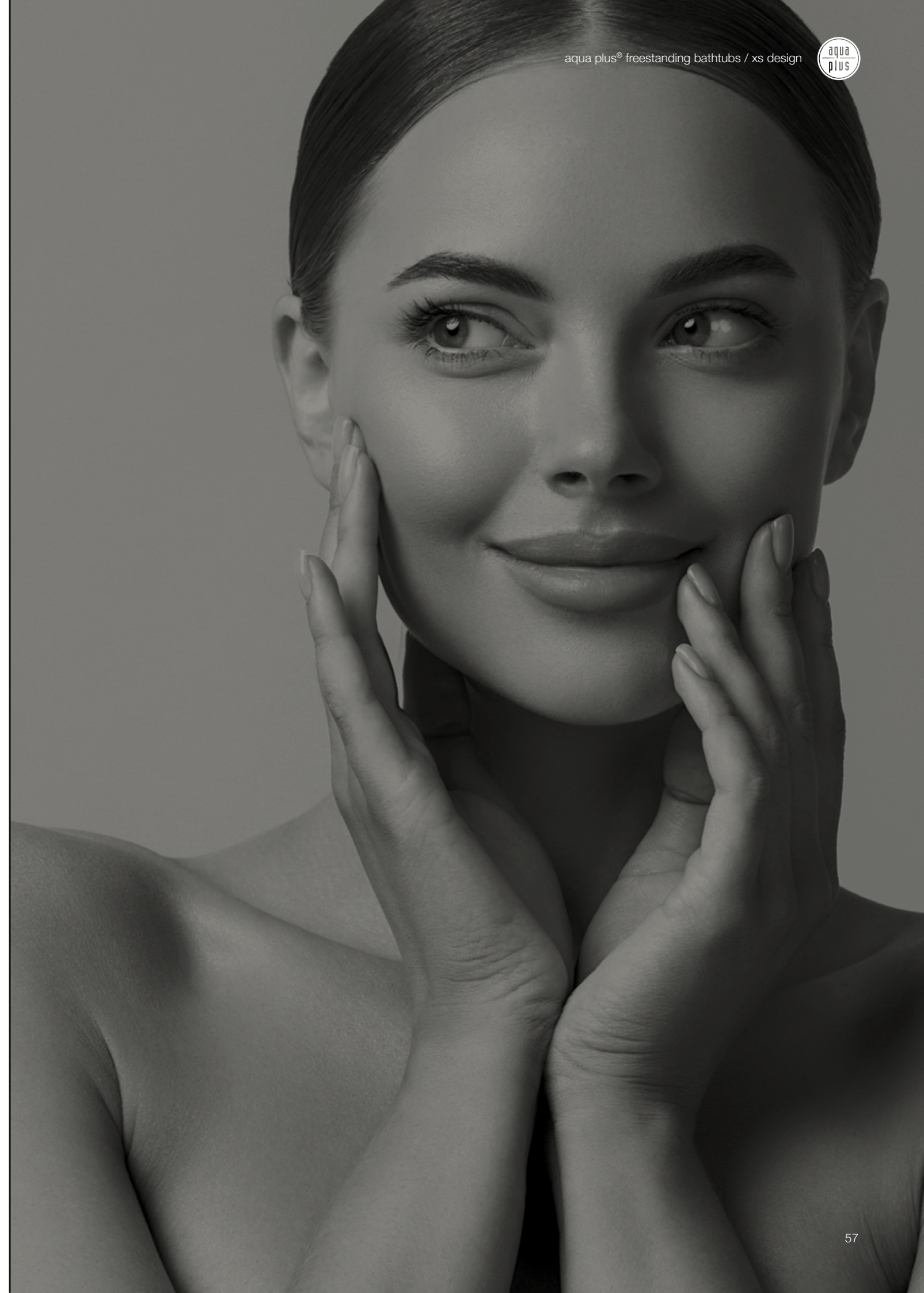


colour options: unicoloured

- WG
- WM

technical data

article number	0100-253
dimensions	1350 x 800 x 650/725 mm (l x w x h)
weight	65 kg
volume	265 l
overflow options	slot overflow, round overflow, overflow filling



make the most
of small scale
bathrooms



xs design

make the most of small scale
bathrooms

elegance on very small space! our xs designs create elegant space wonders ideal for small space concepts and the renovation sector. with their unique extraordinary and space-saving design, they add a special atmosphere to your bathroom even if the space is limited.



form xs

			
fresh xs 1550 x 800 x 610 mm	fresh xs wall 1550 x 800 x 600 mm	fresh xs corner 1550 x 800 x 600 mm	fresh xs corner 1550 x 800 x 600 mm
			
neo 1700 x 795 x 600 mm	wall xs 1650 x 750 x 580 mm	wall xs corner 1650 x 750 x 580 mm	wall xs corner 1650 x 750 x 580 mm
			
loom xs 1700 x 850 x 600 mm	form xs 1550 x 750 x 600 mm	cube xs 1550 x 800 x 570 mm	

fresh xs

our "fresh xs" with its unique design and space-saving features creates a distinctive atmosphere in your bathroom.



colour options: unicoloured

- WG
- WM
- BM
- CM

colour options: bicoloured

- WGBG
- WGBM
- WGAN
- WGCM
- WGK
- WMBM
- WMAN
- WMCM
- WMK

technical data

article number	0100-234
dimensions	1550 x 800 x 610 mm (l x w x h)
weight	44 kg
volume	180 l
overflow options	slot overflow, round overflow, overflow filling



fresh xs wall

our "fresh wall xs" design shows that even the smallest bathroom can be elegantly furnished. this model fits into any small room concept without losing comfort.



colour options: unicoloured

- WG
- WM
- BM
- CM

colour options: bicoloured

- WGBG
- WGBM
- WGAN
- WGCM
- WGK
- WMBM
- WMAN
- WMCM
- WMK

technical data

article number	0100-235
dimensions	1550 x 800 x 600 mm (l x w x h)
weight	42 kg
volume	180 l
overflow options	slot overflow, round overflow, overflow filling

fresh xs corner
corner right, rounding left

the "fresh xs corner" with left rounding and right corner is suitable for renovations due to its unique and unusual design.



colour options: unicoloured

- WG
- WM
- BM
- CM

colour options: bicoloured

- WGBG
- WGBM
- WGAN
- WGCM
- WGK
- WMBM
- WMAN
- WMCM
- WMK

technical data

article number	0100-237
dimensions	1550 x 800 x 600 mm (l x w x h)
weight	36 kg
volume	180 l
overflow options	slot overflow, round overflow, overflow filling



fresh xs corner
corner left, rounding right

the "fresh xs corner" with right rounding and left corner is suitable for renovations due to its unique and unusual design.



colour options: unicoloured

- WG
- WM
- BM
- CM

colour options: bicoloured

- WGBG
- WGBM
- WGAN
- WGCM
- WGK
- WMBM
- WMAN
- WMCM
- WMK

technical data

article number	0100-236
dimensions	1550 x 800 x 600 mm (l x w x h)
weight	36 kg
volume	180 l
overflow options	slot overflow, round overflow, overflow filling

neo

based on the popular design of our successful "fresh" model, this modern bathtub with reduced dimensions meets all requirements of a comfortable luxury bathroom.



colour options: unicoloured

- WG
- WM
- BM
- CM

colour options: bicoloured

- WGBG
- WGBM
- WGAN
- WGCM
- WGK
- WMBM
- WMAN
- WMCM
- WMK

technical data

article number	0100-076
dimensions	1700 x 795 x 600 mm (l x w x h)
weight	48 kg
volume	195 l
overflow options	slot overflow, round overflow, overflow filling



wall xs

(r)evolutionary development! our popular model "wall" in its xs version for small bathrooms.



colour options: unicoloured

- WG
- WM
- BM
- CM

colour options: bicoloured

- WGBG
- WGBM
- WGAN
- WGCM
- WGK
- WMBM
- WMAN
- WMCM
- WMK

technical data

article number	0100-255
dimensions	1650 x 750 x 580 mm (l x w x h)
weight	44 kg
volume	175 l
overflow options	slot overflow, round overflow, overflow filling

wall xs corner

corner right, rounding left

our successful xs model and a flush-mounted corner version. a stylish option for renovating smaller bathrooms. this is the model with the rounding on the left.



colour options: unicoloured

- WG
- WM
- BM
- CM

colour options: bicoloured

- WGBG
- WGBM
- WGAN
- WGCM
- WGK
- WMBM
- WMAN
- WMCM
- WMK

technical data

article number	0100-255-L
dimensions	1650 x 750 x 580 mm (l x w x h)
weight	39 kg
volume	175 l
overflow options	slot overflow, round overflow, overflow filling

wall xs corner

corner left, rounding right

our successful xs model and a flush-mounted corner version. a stylish option for renovating smaller bathrooms. this is the model with the rounding on the right.



colour options: unicoloured

- WG
- WM
- BM
- CM

colour options: bicoloured

- WGBG
- WGBM
- WGAN
- WGCM
- WGK
- WMBM
- WMAN
- WMCM
- WMK

technical data

article number	0100-255-R
dimensions	1650 x 750 x 580 mm (l x w x h)
weight	39 kg
volume	175 l
overflow options	slot overflow, round overflow, overflow filling

loom xs

our elegant model "loom" has also been implemented for smaller bathrooms. design even a small bathroom with stylish elegance.



colour options: unicoloured

- WG
- WM
- BM
- CM

colour options: bicoloured

- WGBG
- WGBM
- WGAN
- WGCM
- WGK
- WMBM
- WMAN
- WMCM
- WMK

technical data

article number	0100-058
dimensions	1700 x 850 x 600 mm (l x w x h)
weight	45 kg
volume	175 l
overflow options	slot overflow, round overflow, overflow filling



form xs

the beautiful "form" has been proportionally reduced in a beautiful compromise for smaller bathrooms.



colour options: unicoloured

- WG
- WM
- BM
- CM

colour options: bicoloured

- WGBG
- WGBM
- WGAN
- WGCM
- WGK
- WMBM
- WMAN
- WMCM
- WMK

technical data

article number	0100-257
dimensions	1550 x 750 x 600 mm (l x w x h)
weight	42 kg
volume	160 l
overflow options	slot overflow, round overflow, overflow filling

cube xs

the "cube" also invites to a full bath in its smaller size. our model "cube xs" is available for you.

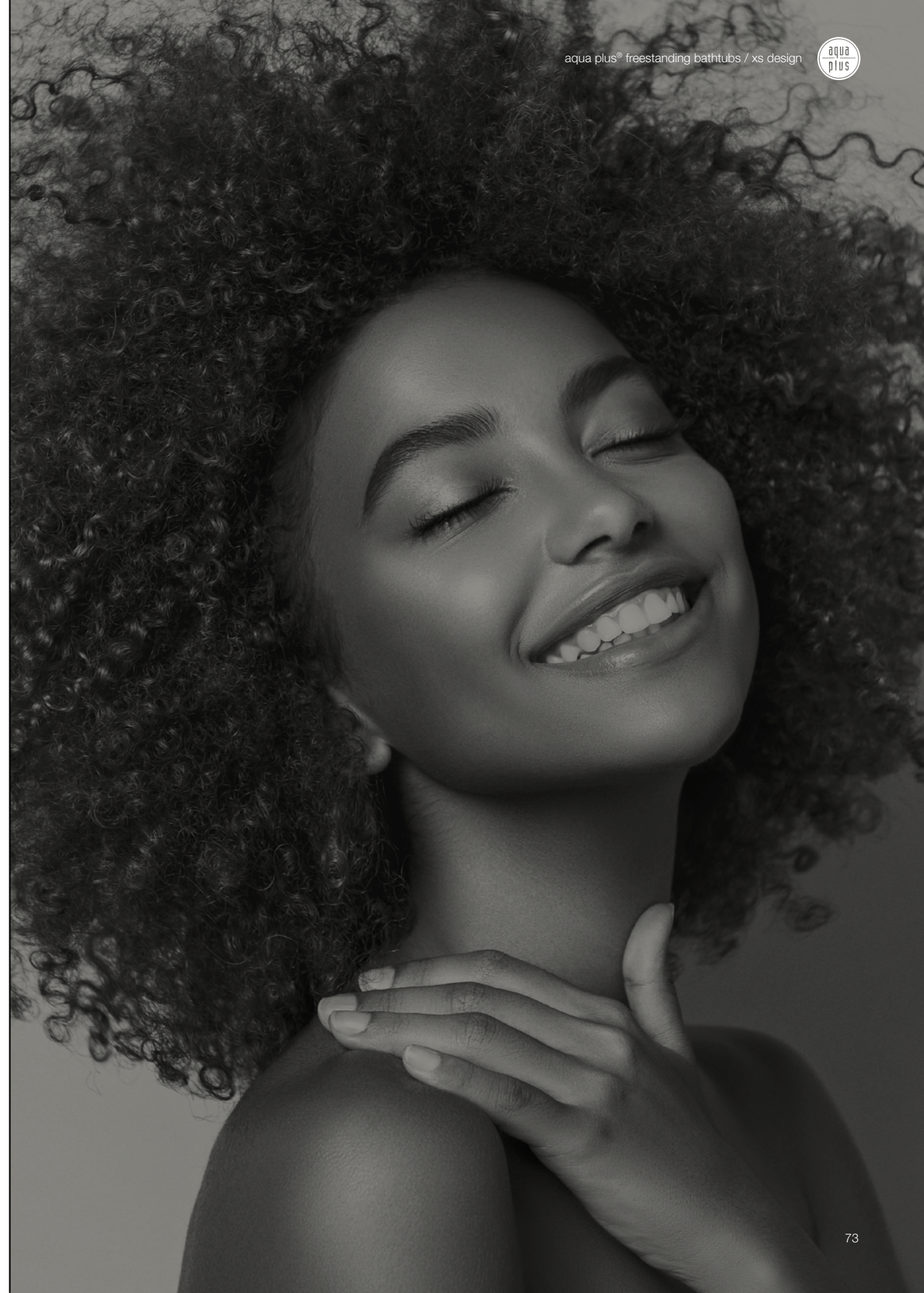


colour options: unicoloured

- WG
- WM

technical data

article number	0100-254
dimensions	1550 x 800 x 570 mm (l x w x h)
weight	42 kg
volume	180 l
overflow options	slot overflow, round overflow, overflow filling



perfect
bathing culture
inspires your
senses



traditional design

perfect bathing culture inspires your senses

imbue your bath with your personality and give it an individual character. use your imagination and feel the inspiration of ancient centuries. we will take you on a journey of the mind, picking up international styles and influences and transferring them into the luxury design of our bathtubs. select from a huge variety of our traditional design freestanding bathtubs and make your bath a little more beautiful.



victorian

		
edwardian 1695 x 760 x 590 mm	edwardian xl 1800 x 800 x 595 mm	princess 1715 x 685 x 660 mm
		
princess I 1715 x 685 x 710 mm	retro 1800 x 850 x 630 mm	slipper 1515 x 725 x 570 / 785 mm
		
roll top 1525 x 720 x 550 / 565 mm	roll top xl 1670 x 720 x 550 / 555 mm	victorian 1745 x 830 x 650 / 810 mm

edwardian

this classic bathtub exudes royal charisma. it presents itself glamorously on gold-coloured or chrome-plated feet.



colour options: unicoloured

- WG
- WM

colour options: bicoloured

- WGBG
- WGRW
- WGRG
- BGWG
- BGSG
- BSWG
- BSSG

technical data

article number	0100-062
dimensions	1695 x 760 x 590 mm (l x w x h)
weight	48 kg
volume	180 l
overflow	round overflow



edwardian xl

we have developed the "edwardian xl" for the royal charm in the more spacious bathroom.



colour options: unicoloured

- WG
- WM

colour options: bicoloured

- WGBG
- WGRW
- WGRG
- BGWG
- BGSG
- BSWG
- BSSG

technical data

article number	0100-063
dimensions	1800 x 800 x 595 mm (l x w x h)
weight	56 kg
volume	220 l
overflow	round overflow

princess

this purist interpretation of a castle bathtub combines elaborate design and modern elements to a perfect result.



colour options: unicoloured

- WG
- WM

technical data

article number	0100-081
dimensions	1715 x 685 x 660 mm (l x w x h)
weight	40 kg
volume	225 l
overflow	round overflow



princess I
with plinth

our purist model "princess" with a decorative base – the model "princess I".



colour options: unicoloured

- WG
- WM

technical data

article number	0100-081-02
dimensions	1715 x 685 x 710 mm (l x w x h)
weight	45 kg
volume	225 l
overflow	round overflow

retro

inspiration from centuries ago! this exclusive, classic design bathtub is reminiscent of the stately times of the roman empire.



colour options: unicoloured

- WG
- WM

technical data

article number	0100-090
dimensions	1800 x 850 x 630 mm (l x w x h)
weight	62 kg
volume	210 l
overflow	round overflow



slipper

the compact version of the "victorian". transform your bathroom into a personalised oasis with a freestanding bathtub.



colour options: unicoloured

- WG
- WM

technical data

article number	0100-064
dimensions	1515 x 725 x 555 / 770 mm (l x w x h)
weight	40 kg
volume	130 l
overflow	round overflow

roll top

back to the roots of the freestanding bathtub. our company's success started out with the models "roll top" and "roll top xl".



colour options: unicoloured

WG

technical data

article number	0100-065
dimensions	1525 x 720 x 550 / 565 mm (l x w x h)
weight	40 kg
volume	168 l
overflow	round overflow



roll top xl

back to the roots of the freestanding bathtub. our company's success started out with the models "roll top" and "roll top xl".



colour options: unicoloured

WG

technical data

article number	0100-066
dimensions	1670 x 715 x 440 mm (l x w x h)
weight	45 kg
volume	192 l
overflow	round overflow

victorian

the name is the game in the "victorian": this traditional bathtub in classic victorian style adapts perfectly to the body and ensures an all-round relaxing full bath.



colour options: unicoloured

- WG
- WM

colour options: bicoloured

- WGBG
- WGRW
- WGRG
- BGWG
- BGSB
- BSWG
- BSSG

technical data

article number	0100-061
dimensions	1745 x 830 x 650/810 mm (l x w x h)
weight	46 kg
volume	185 l
overflow	round overflow



the universe
of elegance and
design



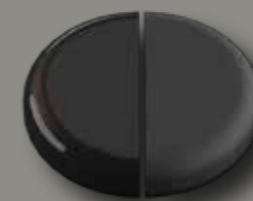
colourful design

the universe of elegance
and design

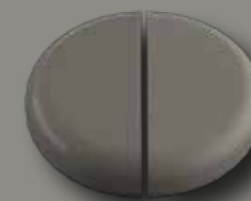
glossy or matte? the choice of our coloured bathtubs is
endless! let your imagination and creativity run wild. your
wish is our demand!



white



black



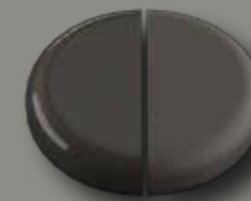
cement



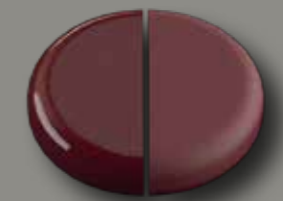
silver leaf, white acrylic



silver leaf, black acrylic



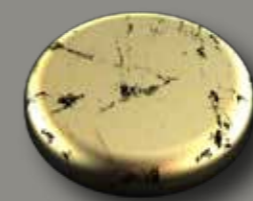
anthracite



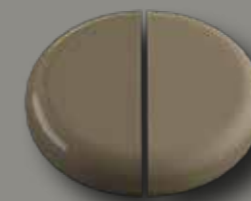
bordeaux red



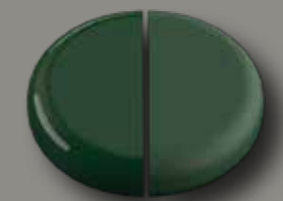
gold leaf, white acrylic



gold leaf, black acrylic



clay



racing green

unicoloured

immerse yourself in our architectural universe, led by elegance and design, and let our glossy and matte monochrome bathtubs enchant you.



unicoloured glossy **colour code**

white glossy / white glossy WG

unicoloured matte **colour code**

cement matte / cement matte CM
 black matte / black matte BM
 white matte / white matte WM

bicoloured WG

have a look at our splendid world of colours! choosing a twotone glossy bathtub will certainly put a glamorous eye-catcher in your bathroom. this timeless yet luxurious design fits with any of our tubs. contemporary or modern design? let your creativity run wild.



bicoloured Inner shell colour WG





colour code

	white glossy / black glossy	WGBG
	white glossy / black matte	WGBM
	white glossy / anthracite matte	WGAN
	white glossy / cement matte	WGCM
	white glossy / clay matte	WGK
	white glossy / bordeaux red glossy	WGRW
	white glossy / racing green glossy	WGRG
	white glossy / gold leaf, white acrylic	BGSB
	white glossy / gold leaf, black acrylic	BGSB
	white glossy / silver leaf, white acrylic	BSWG
	white glossy / silver leaf, black acrylic	BSSG

bicoloured WM

set trends with your choice of a two-tone matte bathtub. contemporary and modern flair give your bathroom a particularly unique charisma. let our matte shades and the variety of combinations fascinate you.



bicoloured Inner shell colour WM	colour code
 white matte / clay matte	WMK
 white matte / cement matte	WMCM
 white matte / anthracite matte	WMAN
 white matte / black matte	WMBM

perfect relaxation
assured by
highest demands
of comfort

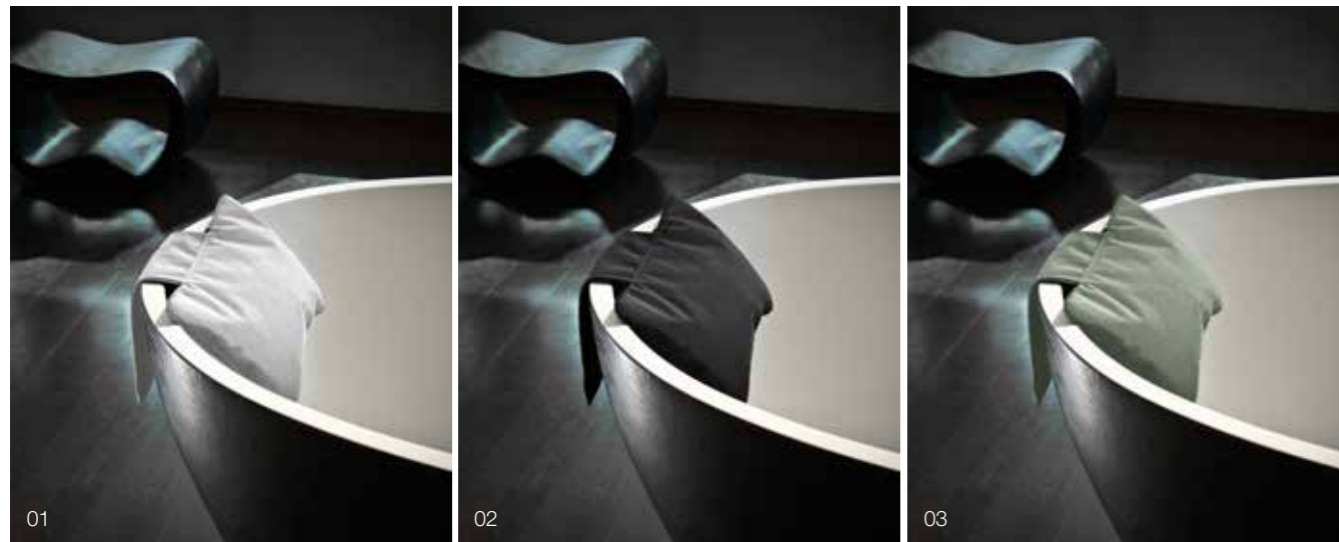


accessories

perfect relaxation assured
by highest demands of comfort

neck pillow

we recommend the “loft” neck pillows for an even more relaxing bathing experience. these accessories are processed to our high standards. as a result, they are extremely durable. with their different shades of colour, the models fit perfectly into the elegant aesthetics of your bathroom.



01 neck pillow, white

cover: 100% water-repellent nylon
filling: 100% polyester
dimensions: 32 x 21 x 7 cm (l x w x h)
washable at 30 °C

02 neck pillow, black

cover: 100% water-repellent nylon
filling: 100% polyester
dimensions: 32 x 21 x 7 cm (l x w x h)
washable at 30 °C

03 neck pillow, reed

cover: 100% water-repellent nylon
filling: 100% polyester
dimensions: 32 x 21 x 7 cm (l x w x h)
washable at 30 °C

clean & care cleaner

the clean & care cleaner has been developed particularly for gentle daily cleaning and care of all acrylic and mineral surfaces. we won't be happy until you are satisfied. clean & care represents intensive cleaning, combined with optimal care and highest quality. developed based on years of experience and expertise in processing and production of cast sanitary acrylic and specifically developed mineral material.

the clean & care cleanser removes water stains, soap, and dirt deposits and provides lasting protection with its pearl effect and a brilliant surface at regular use!



care notices

cleaning

we recommend our “clean & care” cleaner, formulated specifically for cleaning of sanitary cast acrylic surfaces as well as mineral material surfaces, for regular and proper care of our acrylic products. acrylic can also be cleaned with a moist cloth and mild general-purpose/neutral cleaner. stubborn adhesions can be polished off with qui108 polishing paste (cerapol) and a polishing cloth at need. if conventional cleaning is not sufficient, please read the chapter “repairing scratches”.

repairing scratches

acrylic usually can be repaired. small scratches or stains can be removed with fine sandpaper.

matte surfaces – we recommend treating matte surfaces by grinding the affected area with soft abrasive pads (220) until the scratches are rendered invisible. for a homogeneous overall look, follow up by regrounding the area with soft sanding pads (320) and cleaning the affected area along with the entire bathtub using the clean & care cleaner.

shiny surfaces – slight scratches can be removed by processing the affected area by wet polishing with 1500 grit sandpaper first (i. e. moisten the sandpaper with a little water). next, apply a small amount of the qui108 polishing paste to a microfibre cloth and rub the polishing paste into the sanded area with circular movements until the

damage is repaired and the desired degree of gloss is achieved. wipe any residues of the polishing paste away with a clean and damp cloth. clean the affected area along with the entire bathtub with the clean & care cleaner. this works only for light cuts. anything else requires a professional polishing/sanding machine.

notice

agents with the following ingredients explicitly must not be used when using our acrylic products:

- hydrogen peroxide
- ammonia
- aminophenol
- phenylenediamine
- toluylenediamine
- resorcin
- iodine

all warranty claims are void if any agents with the above ingredients are used. generally, the warranty period is 10 years.

drain & overflow fittings

for modern, concept, and xs designs

slot overflow / kit A1

slot overflow and click-clack closure with siphon, flexible connection pipe included, pre-assembled at the factory.



round overflow / kit A2

slot overflow and click-clack closure with siphon, flexible connection pipe included, pre-assembled at the factory.



round overflow, tub filling / kit A3

slot overflow and click-clack closure with siphon, flexible connection pipe included, pre-assembled at the factory.



drain & overflow fittings for traditional designs

ornamental chain & plug / kit C1, C2

with siphon, factory pre-assembled; brass L-drain pipe included. available for models edwardian, roll top, victorian

kit C1 = polished brass

kit C2 = chrome



click-clack-system / kit B1, B2, B3

with siphon, pre-assembled at the factory; brass L-drain pipe included. available for models princess, princess I, loft, loft IV

kit B1 = polished brass

kit B2 = chrome

kit B3 = brushed aluminium



lion feet / included in kits C1, C2

only for the model victorian

claw feet / included in kits C1, C2

only for the models edwardian, edwardian xl, roll top, roll top xl



aqua spa® – harmony for body and mind

being allowed to design your retreat, your wellness oasis, is a great responsibility that we have been carrying with pleasure for decades.

we have introduced an entire series of innovations and optimisations for your personal spa area with our aqua spa® line in order to further optimise and improve the high-quality bathtubs of our aqua plus® series in their purist design without changing the coherent design concept.

you can now choose from a wide range of options to turn your bathroom into a personal wellness area:

the invisible sound system is connected by bluetooth to give you access to your personal music collection. a perfect sound experience just as you like it is included.

the integrated ambient lighting with integrated LED spots makes your bathroom appear in a new light. choose between different colours and colour modes.

the ultra-flat and ergonomically adapted whispering air jets provide a sparkling massage without any noise or splashing water. as an option, you may use the integrated ozone fan to improve the water quality and purify it.

the automatic drying system takes care of cleaning and disinfection of the air nozzles after your bath.

all options can be remote-controlled. finally, we have integrated an automatic dry-running stop into your aqua plus® bathtub, to protect the pump from taking damage due to running dry.

this way, we can offer a long-lived product to be enjoyed for many years to come. we will gladly provide individual advice to you.



freestanding
spas



spa design

enjoy the unique bathing experience from aqua spa®

our aqua spa® wellness system is capable of being integrated into many of our aqua plus® bathtub models. all electronic parts fulfil the demands of IPX5 protection rating standard. our aqua spa® collection is manufactured exclusively in europe, fulfilling highest quality requirements. we grant a 2-year warranty on all wellness system components. aqua spa® bathtubs are made of best lucite®

sanitary cast acrylic (compliant with EN 263) fulfilling highest quality standards – same as aqua plus® bathtubs do. they are ce compliant to EN 14516 – just like all aqua plus® bathtubs. aqua spa® bathtubs comply with DIN 4109 and SIA 181.



loom

box 1800 x 800 x 600 mm	club Ø 1600 x 620 mm	cosy 1800 x 850 x 600 mm	cube 1700 x 800 x 570 mm
cube xs 1500 x 800 x 570 mm	culture 1800 x 800 x 600 mm	dream / 2 models 1800 x 800 x 600 mm	form 1900 x 895 x 600 mm
form xs 1550 x 750 x 600 mm	fresh / 4 models 1800 x 800 x 600 mm	fresh 2.0 / 4 models 1700 x 800 x 600 mm	fresh xs / 4 models 1550 x 800 x 610 mm
hot 1795 x 795 x 595 mm	loom 1900 x 950 x 600 mm	loom xs 1700 x 850 x 600 mm	loung 1850 x 950 x 635 mm
mood 1805 x 800 x 610 mm	neo 1700 x 795 x 600 mm	oval 1795 x 945 x 620 mm	pure / 2 models 1800 x 800 x 600 mm
relax 1800 x 850 x 625 / 760 mm	nice 170 1700 x 750 x 600 mm	nice 180 1800 x 850 x 600 mm	tidy 1800 x 800 x 600 mm
venice 1805 x 835 x 670 / 745 mm	summer / 2 models 1900 x 900 x 600 mm	wall / 3 models 1800 x 790 x 580 mm	wall xs 1650 x 750 x 580 mm

spa modules

1. massage

- 24 ultra-flat air nozzles
- ozone therapy
- automatic drying system
- remote control

2. light

- 20 mini LEDs
- colour change
- remote control

3. music

- sound system with 2 speakers
- bluetooth connection
- controlled via the bluetooth-capable device
- remote control



24 ultra-flat air nozzles

ultra silent system for soft pearling massage, colour of nozzles: chrome polished; other colours upon request.



20 mini LEDs

the colour change creates a perfect ambience in your bathroom.

features & details

light

enjoy a bathing experience in the perfect atmosphere: we equip our aqua spa® wellness bathtubs with integrated mini-leds that will envelope your bathroom in the perfect atmosphere to your liking. 20 LEDs, with 10 adjustable colours are available – individually adjustable by remote control.

sound

“without music, life would be a mistake” (friedrich nietzsche). enjoy your own playlist, or your favourite radio stations, with our integrated sound system. the set has 2 integrated, invisible speakers and a bluetooth interface to let you play your own programme with bluetooth devices.

perfectly quiet massage

listen to this silence! our aqua-spa®-system is so silent that you can only hear the whispering sound of the gently bubbling water. lie back, relax, and enjoy a sparkling massage while reading a book, without being disturbed by the noise or splashing water. 24 ultra-flat and ergonomically designed air nozzles ensure greatest bathing comfort.

ozone therapy

healthy and vital due to the blower function. the integrated air nozzles not only provide a soothing massage, but also enrich the oxygen flow with ozone for an additional disinfecting effect and improved bathing water quality.

automatic post-drying

to dry the air nozzles from remaining water and prevent bacteria and odours formation, the aqua spa® wellness bathtub has an automatic drying system. 15 minutes after the water has been let out of the tub, the function will activate automatically. it runs for 2 minutes, securing unproblematic and long-lasting pleasure when using the aqua spa® bathtub. the drying system can also be started manually via the remote control.

disinfection

our automatic drying system dispenses with the need for disinfecting the air nozzles. moisture is blown out entirely and your dry and disinfected tub is ready for its next wellness use.

dry-running protection

the dry-running protection of our aqua spa® wellness bathtubs turns it off in time to keep the system pump safe from damage.

remote control

control all functions of our aqua spa® wellness baths with a single remote control. light, sound, and massage are all in your hands! intuitive and modern design make the remote control fit perfectly into your wellness oasis as well.



why
KNIEF?

individual design in a clear formal language

our customers appreciate us for our innovation and highest quality standards. this is why knief is considered the industry benchmark for high quality standards and has been a qualified oem manufacturer for popular brands for years.

as a premium manufacturer, we place great importance on high-quality materials and production technologies that we are constantly developing and optimising. this is how we set innovative standards in our entire industry.



aqua plus® features

- cross-linked cast, double-walled lucite® sanitary acrylic
- production "made in europe"
- LGA-certified according to EN 198
- LGA certified drain and overflow fitting included
- CE conformity to EN 14516
- CE design protection
- certification to DIN 4109 and SIA 181
- reinforced inner and outer wall
- exceptional durability & longevity
- uv-resistance
- 10 years warranty
- simple assembly and quick installation
- all bathtubs are supplied ready for connection, with integrated drain and overflow system, siphon, and drainpipe
- many models are available as wellness spa tub as well

KNIEF features

- manufacturer of acrylic and mineral products
- family-owned business
- direct personal responsibility
- strong innovation and design affinity
- reliable, direct partner
- european production
- many years of manufacturing expertise
- central logistics in bremen
- highest product and quality competence
- high oem competence

general terms and conditions of supply for products and services of knief & co. gmbh for business transactions with contractors

i. general terms

1. these general delivery terms shall apply exclusively to any legal relations between knief & co. gmbh (hereinafter: "kco") and the contractual partners in connection with deliveries and/or services as well as offers of kco. they shall be part of any contracts kco enters into with its contractual partners (hereinafter the "customer") for the deliveries and services offered by kco.
2. these general delivery terms shall also apply to any future deliveries, services, or offers to customer, even if not agreed again separately.
3. customer's or third parties' terms and conditions shall apply only to the extent that kco has explicitly agreed to them in writing, even in the case of unconditionally executed customer orders.

ii. offer and conclusion of contract

1. all offers made by kco are subject to change without notice and non-binding, except if they are explicitly marked as binding or containing a specific deadline for acceptance. kco may accept orders within two weeks of receipt by sending the ordered products or by sending an order confirmation.
2. the legal relationship between kco and customer shall be subject solely to the written contract or written order confirmation, each including these general delivery terms. verbal side agreements are not legally binding.
3. supplements to and amendments of the agreements made, including these general delivery terms, shall require written form in order to be effective. apart from managing directors, the employees of kco or other vicarious agents charged by kco shall not be entitled to enter into any deviating agreements.
4. transmission by telecommunication, in particular by telefax or by email, shall be sufficient to comply with the requirement of written form, provided that a copy of the signed declaration is transmitted.
5. information on the matter of the delivery or service (e.g. dimensions, weights, load-bearing capacity, tolerances, composition) as well as drawings and illustrations shall only be binding if explicitly agreed in writing, except if usability for the contractually intended purpose requires precise conformity. instead of guaranteed characteristics, they are descriptions or identifications of the delivery or service. deviations

customary in the trade and deviations based on legal regulations or to integrate technical improvements, as well as replacement of components by equivalent parts, shall be permitted as far as they do not impair usability for the contractually intended purpose.

iii. prices, terms of payment, and offsetting

1. the prices shall only be valid for the scope of delivery and/or service agreed in the contract or the order confirmation. the prices are stated in euros, at kco's option ex works or ex company headquarters bremen, plus applicable statutory value added tax. the agreed incoterms shall be binding for export deliveries.
2. if kco has taken over transport, and in the absence of any agreement to the contrary, customer shall bear all transport costs in addition to the contractual remuneration for these services.
3. prices promised in writing shall be fixed prices. otherwise, the list prices of kco that are valid at the time of delivery as well as the conditions negotiated in individual cases shall apply.
4. invoiced amounts shall be due and payable to kco's bank accounts free of charge without at once after receipt of the invoice by customer, except if agreed differently in writing. the date of receipt by kco shall be decisive for the date of payment. payment shall only be deemed made if kco can dispose of the amount. payment by cheque or bill of exchange shall only be deemed made upon redemption. customer must reimburse kco for any additional amounts incurred in connection with the redemption without undue delay. if customer does not pay an amount when due, interest of 5% p.a. shall be incurred on the outstanding amounts from the due date onwards.
5. any payments shall be applied first to costs, then to interest, and then to the oldest claim of kco, irrespective of any other stipulation by the client.
6. customer must only offset such counterclaims or withhold payment due to such claims that are legally established, undisputed, or acknowledged by kco. customer shall only have the right to exercise any right of retention if its counterclaim is based on the same contractual relationship and kco does not avert the exercise by providing collateral, including by way of bank guarantee.

the right to claim higher interest and further damages in cases of default shall remain unaffected.

iv. time of delivery and performance

1. deliveries shall be made ex works or ex company headquarters at the discretion of kco.
2. deadlines and dates for deliveries and services that have not been explicitly agreed as binding in writing shall be exclusively non-binding information. if shipment has been agreed, delivery deadlines and delivery dates shall refer to the time of handover to the forwarding agent, carrier, or other third party charged with the transport.
3. the deadlines and dates shall be postponed to a reasonable extent if customer does not meet its obligations.
4. if failure to meet deadlines and dates due to:
 - a) force majeure
 - b) other events that are unforeseeable at the time of conclusion of the contract (e.g. any kinds of operational disruptions, energy shortages, strikes, lawful lockouts)
 - c) obstacles caused for kco or its suppliers by german or other applicable legal regulations, periods and deadlines shall be extended appropriately, plus a reasonable start-up time. if reasons in accordance with a) to c) make delivery or performance substantially more difficult or impossible for kco and the obstacle is not only temporary in nature, kco and customer shall have the right to withdraw from the contract. claims for damages shall be excluded in such cases.

in other cases of non-compliance with the deadlines and dates, customer shall grant kco a reasonable grace period from the date of receipt of the written notice of non-compliance by kco.

5. kco shall have the right to make partial deliveries at any time if
 - a) customer can use the partial delivery within the scope of the contractual purpose,
 - b) customer does not incur any substantial additional expenses of its own or incur substantial additional costs towards any third parties, unless kco agrees to bear such costs.

v. loading, shipping, packaging, insurance

1. loading and shipping shall be at customer's risk.
2. the method of shipment and packaging shall be at kco's sole discretion. kco shall apply reasonable efforts to accommodate customer's wishes and interests concerning the shipment and packaging method.
3. kco shall not take back transport and other packaging in accordance with the packaging ordinance. customer shall be responsible for disposal of the packaging at its expense.
4. kco shall insure the shipment exclusively at customer's explicit

written request and at customer's expense.

5. the risk of shipment in case of return of the delivery shall be borne by customer, except if the return is due to legal or contractual obligations of kco.

vi. transfer of risk

1. risk shall pass to customer at the latest when the delivery item is handed over to the carrier, freight forwarder, or other third party designated to perform the shipment. handover to the carrier shall be deemed to have taken place at the beginning of the loading process. this shall also apply if partial deliveries are made or if kco has assumed any other services (e.g. transport).

if the shipment or handover is delayed due to circumstances caused by customer, risk shall pass to customer on the day on which the delivery item is ready for shipment and kco has notified customer of this.

2. storage costs subsequent to transfer of risk shall be borne by customer.

vii. warranty

1. the warranty period shall be two years from the date of delivery or, if acceptance is required, from the date of acceptance. this period shall not apply to any claims for damages by customer due to injury to life, body, or health or from intentional or grossly negligent breaches of obligations by kco or its vicarious agents, in each case time-barred in accordance with the statutory provisions.
2. the warranty shall not apply if customer or a third party modifies/repairs the delivery item without kco's consent, defects cannot be remedied or if remedy becomes unreasonably difficult as a result, or if the delivery item is improperly handled, stored, or maintained. customer shall bear any additional costs for the reasonable remedying of defects resulting from the modification.
3. the delivery of used items agreed with customer in exceptions shall be excluded from warranty.

viii. defects of material

1. due to its nature, ceramic material may show cracks in the glaze and colour deviations. in addition to colour deviations, orders for second-choice tiles (reduced quality assortment) may also show defects on the edges or in the surface quality. none of these marks affect the quality of the coating. they do not constitute any defect. in the case of natural materials, e.g. marble or natural stone in general, colour deviations, glass veins, hairline cracks, and similar material deviations may occur. kco accepts no warranty for these either.
2. bathtubs and shower trays made of sanitary acrylic as well as all products of k|stone mineral material shall be supplied in accordance

with the relevant technical requirements resulting from ce conformity.

3. the delivery item must be inspected carefully without undue delay following delivery to customer or to a third party designated by customer. concerning any obvious defects, missing parts, or other defects that would have been apparent upon prompt and careful inspection, the delivery items shall be deemed approved by customer if kco does not receive any written notice of defect within seven business days after delivery. regarding any other defects of material, the delivery items shall be deemed accepted by customer if kco does not receive any written notice of a defect within seven working days after the date on which the defect has become apparent. however, if the defect was already apparent to customer at an earlier time during regular use, that earlier time shall be decisive for commencement of the period for giving notice of the defect. customer must not refuse delivery due to insignificant defects.

4. any rejected delivery item must be returned to kco freight prepaid upon kco's request. in case of a justified complaint, kco shall reimburse the costs of the most favourable shipping method. this shall not apply if costs increase because the delivery item is located at a place other than the place of intended use.

5. if there are any defects of material in the delivered goods, kco shall be obligated and entitled to repairing or replacing the goods twice. if this fails, i.e. if the repair or replacement is impossible, unreasonable, refused, or unreasonably delayed, customer shall be entitled to withdraw from the contract or to reduce the purchase price appropriately, except if further attempts of repair are appropriate and reasonable for customer due to the subject matter of the contract.

customer shall not have the right to withdraw from the contract or to reduce the purchase price if kco has the right to refuse subsequent performance based on the statutory provisions.

6. replacement and warranty parts will remain property of kco.

7. if any defect is due to kco's fault and if there is a case of failure, customer may claim damages subject to the conditions set out in item x.

8. if there are any defects in components of other manufacturers that kco is unable to remedy for reasons of licensing or due to factual reasons, kco shall, at its choice, assert its warranty claims against the manufacturers and suppliers for customer's account or assign them to customer. warranty claims against kco for such defects shall be subject to the other conditions and in accordance with these general delivery terms and shall apply only if the legal enforcement of the above claims against the manufacturer and supplier has been unsuccessful or is futile, e.g. due to insolvency.

ix. industrial property rights and copyrights; defects of title

1. except if otherwise agreed between the contracting parties, kco shall be obligated to deliver the goods free of third-party intellectual property rights and copyrights only in the country of the place of

delivery.

2. items viii 7 and 8 shall apply accordingly in case of infringement of rights by items supplied by kco to other manufacturers and suppliers.

x. claims for damages

1. kco shall be liable in accordance with the mandatory statutory provisions if customer asserts any claims for damages, in particular those based on intent or gross negligence, for guaranteed characteristics or for injury to life, body, or health.

2. kco shall not be liable in case of simple negligence of its bodies, legal representatives, employees, or other vicarious agents, except in cases of violation of any essential contractual obligations. essential contractual obligations shall be, if agreed, the obligation to deliver the delivery item on time, to keep the goods free from defects of title and material that impair their function or usability more than insignificantly, as well as obligations to advise, protect, and take care of the goods intended to enable customer to use the delivery item in accordance with the contract or to protect the life and body of customer's personnel or to protect customer's property from substantial damage.

3. as far as kco is not charged with intentional breach of contract, its liability for damages shall be limited to damage kco has foreseen as a possible consequence of a breach of contract at the time of conclusion of the contract or that kco should have foreseen if applying due diligence. indirect damages and consequential damages that are the consequence of defects of the delivery item shall only be eligible for compensation as far as such damage is typically to be expected when using the delivery item as intended.

4. the above disclaimers and limitations of liability shall apply to the same extent for the benefit of kco's bodies, legal representatives, employees, and other agents.

5. as far as kco provides any technical information or advice and such information or advice is not part of the contractually agreed scope of services owed by kco, it shall be provided free of charge and subject to exclusion of any liability.

6. any liability for damages beyond the stipulations above on the part of kco shall be excluded.

xi. reservation of title

1. kco shall retain title in the delivered items (hereinafter also the "goods subject to retention of title") until all claims against customer from the business relationship have been met. if the value of all collateral rights to which kco is entitled exceeds the value of all secured claims by more than 20%, kco shall release a corresponding share of the collateral at customer's request. kco shall have the right to choose the collateral to be released.

2. while title is reserved, customer shall be prohibited from pledging or transferring title by way of collateral.

3. if customer resells goods subject to retention of title, it hereby assigns its future claims against its purchasers from the resale, together with any ancillary rights – including any balance claims – to kco as collateral, without the need for any further special declarations. if the goods subject to retention of title are resold together with any other items without individual prices being agreed for the goods subject to retention of title, customer shall assign that part of the total purchase price claim to kco that corresponds to the amount invoiced by kco for the goods subject to retention of title.

4. customer shall have the right to process the goods subject to retention of title or to mix or combine them with other objects. processing shall take place for kco. customer shall keep the resulting new object for kco with the care of a prudent businessperson. the new object shall be considered goods subject to retention of title. kco and customer hereby agree that kco shall be due co-ownership of the new object in the amount of the share resulting from the ratio of the value of the combined or mixed goods subject to retention of title to the value of the other goods at the time of combination or mixing if the goods subject to retention of title are combined or mixed with any other objects that do not belong to kco. in this respect, the new object shall be deemed goods subject to retention of title.

the provision on the assignment of claims in accordance with sub-item 3 shall apply to the new item as well. however, the assignment shall only apply up to the amount corresponding to the value of the processed, combined, or mixed goods subject to retention of title invoiced by kco.

if customer combines the goods subject to retention of title with any real estate or movable property, it shall also assign its claim to remuneration for the combination, together with all ancillary rights, in the amount of the ratio of the value of the combined goods subject to retention of title to the other combined goods at the time of the combination, to kco as collateral.

5. until revocation, customer shall be authorised to collect assigned receivables from the resale. kco shall have the right to revoke customer's authorisation to collect for cause. kco shall then have the right to disclose the assignment as collateral and to realise the assigned receivables following prior warning and observance of a reasonable grace period.

6. customer shall inform kco without undue delay of any attachments, seizures, or other disposals or interventions by third parties. if any credible justified interest is presented, customer shall provide kco with the information required to assert its rights against customer's purchaser without delay. it shall hand over the necessary documents.

7. in cases of breach of obligations by customer, in particular in case of default of payment, kco shall have the right to withdraw from the contract in addition to taking back the goods following unsuccessful expiration of a reasonable grace period set for customer to perform; the legal provisions concerning dispensability of setting a grace period shall not be affected. customer shall be obligated to surrender the goods. taking back or assertion of the retention of title or seizure of the goods subject to retention of title by kco shall not constitute withdrawal from the contract, except if kco has explicitly declared this.

xii. jurisdiction and applicable law

1. the place of jurisdiction for any disputes arising directly or indirectly from the contractual relationship shall be the registered office of kco if customer is a merchant, a legal entity under public law, or a public-law special fund or if customer does not have any general place of jurisdiction in germany. however, kco shall also have the right to bring an action at customer's place of jurisdiction.

2. the relations between kco and customer, including interpretation of the contract, shall be subject exclusively to the laws of the federal republic of germany. the united nations convention on contracts for the international sale of goods of 11 april 1980 (cisg) shall not apply.

xiii. liability

the remaining parts of the contract and these general delivery terms shall remain binding even if individual provisions are legally invalid. any gaps in the provisions shall be deemed filled by such legally valid provisions that the contracting parties would have agreed in accordance with the economic objectives of the contract and the purpose of these general delivery terms, had they known of the gap in the provisions.

this catalogue is published by knief & co. gmbh. all products are developed and produced entirely in europe. technical changes and typographical colour deviations and errors reserved.

contact

knief & co. gmbh
am hansastadion 2
d-28277 bremen
germany

t +49 - 421 - 163 23 00
t +49 - 421 - 985 08 10
f +49 - 421 - 163 23 22
info@kniefco.com
www.kniefco.com



acrylic

aqua plus: acrylic bathtubs from knief – unique in shape, workmanship, and quality.

aqua spa: your private wellness area. choose from our extensive range of products and enjoy our spa options.

aqua tecc: innovations in design and technology – our development department researches to bring pleasure to your bathroom.

k|stone®

solid architecture made of mineral material. our k|stone® products stand out with their shape, feel, and processing.



enjoy
your individual design



join us

we have an impressive presentation of our products prepared for you in our show room. experience the diverse design options and get an idea of the attractive combinations in terms of design, aesthetics, and colour compositions. we look forward to meeting you!



this catalogue is published by knief & co. gmbh.
all products are developed and produced entirely in
europe. technical changes and typographical colour
deviations and errors reserved.

thank you

KNIEF

knief & co. gmbh / am hansastadion 2 / 28277 bremen / germany
tel +49-421-163 23 00 / +49-421-985 08 10 / fax +49-421-163 23 22 / info@kniefco.com / www.kniefco.com