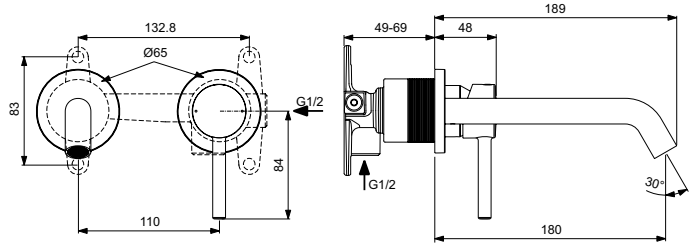




Ideal Standard

## BASIN MIXER

## Ceraline



Article-No.: **A6938AA**

### Built-in basin mixer, 180mm spout

Ceraline built-in basin mixer (Kit 2, visible part). Using 28 mm FirmaFlow ceramic cartridge with hot water limiter, metal handle with red and blue colour indication and tubular spout 180 mm with Cache aerator. To be used only in combination with: A1313NU Kit 1 (internal part), please order separately.

Colour: AA - Chrome

Technology: FirmaFlow

#### More product details:

Type:	Kit 2
Mounting:	Built-in
Operation Type:	Single lever
Style:	Contemporary
Accreditations:	DIN EN 817, DIN 4109 Gruppe 1
Operation Pressure (bar):	3
Flow Rate (litre):	14
Net Weight (kg):	0,884
Material:	Chrome plated brass
Height (mm):	113
Width (mm):	193
Depth (mm):	213
Shape:	Round
Certificate Number:	EN 817