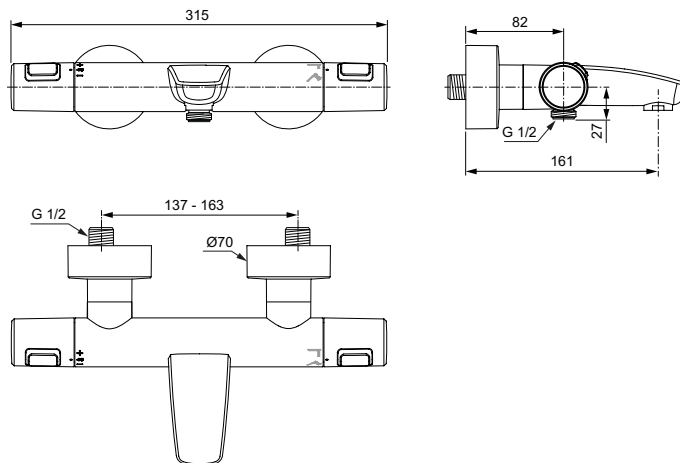


Ceratherm T25



Article-No.: **A7544XG**

Bath&Shower exposed thermostatic mixer

Ceratherm T25 exposed model using s-connector kit with hidden escutcheon, IS Thermostatic cartridge, Ceramic valve G1/2 180°, Cool body technology, Plastic handles with hot water at 40°C stop button and 50% water volume stop button, Diverter integrated into the body- 180 degree operation, Perlator aerator, Non return valve. Without accessories.

Colour: XG - Silk Black

Technology: FirmaFlow Therm

More product details:

Type:	With Integrated diverter
Mounting:	Exposed
Operation Type:	Thermostatic
Style:	Contemporary
Accreditations:	EN1111
Operation Pressure (bar):	3
Net Weight (kg):	1,95
Material:	Powder coating finish
Height (mm):	80
Width (mm):	315
Depth (mm):	183