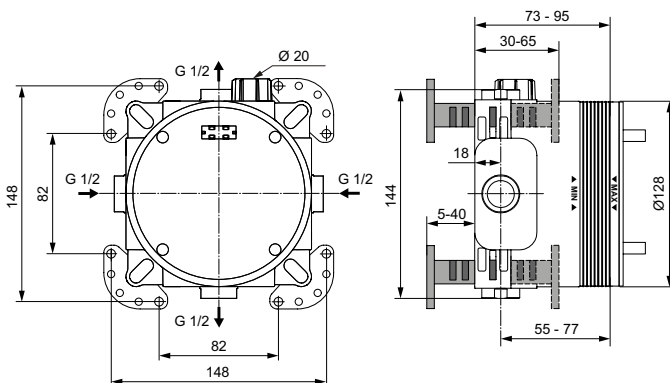


BUILT-IN KIT

Multisuite



Article-No.: **A1000NU**

Easy-Box universal built-in Kit1

Easy Box KIT1, internal built in part for built in fittings, with pipe connections, fixation feet and fixation holes, support for accurate and reliable positioning both horizontally and vertically, grooves to facilitate trimming of the protruding parts of the box and flushing device, G1/2" connection thread.

Colour: NU - Unfinished

More product details:

Type:	Kit 1
Mounting:	Built-in
Style:	Contemporary
Accreditations:	DIN 4109 Gruppe 1
Operation Pressure (bar):	3
Net Weight (kg):	0,986
Material:	Mixed material
Height (mm):	148
Width (mm):	148
Depth (mm):	135
Installation:	Built-in