



Design "plate"

**TECEdrainline tileable channel "plate", for shower channel, straight**

Article number: 600870

Nominal length: 800 mm

Surface: polished

DU 1: 1 pc.

**Description:**

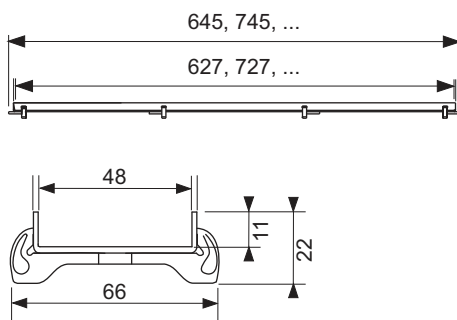
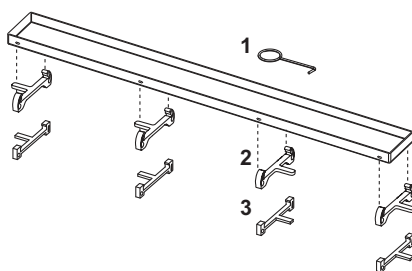
Tileable channel for TECEdrainline shower channel, for fitting into the channel body, made of stainless steel with polished visible edges. Maximum test load 300 kg based on load class K3. Tiles can be attached by the customer using elastic adhesive, e.g. silicon or epoxy resin adhesive.

**Caution:**

Check the adhesive to ensure tile compatibility!

**Sales data:**

Product name: TECEdrainline tileable channel "plate" 800 mm stainless steel, straight  
 Commodity group: 600  
 Product group: 3006000040

**Dimensional drawings:****Spare parts:**

- |   |        |  |
|---|--------|--|
| 1 | 668014 | Lift tool                                    |
| 2 | 668020 | Hollow feet, grey (from 08/2007)             |
| 3 | 668024 | Hollow feet, stainless steel (until 08/2007) |